



Improving Work Zone

Guidance and Safety



Work zones are some of the most dangerous areas on any roadway system. 3M™ Stamark™ Wet Reflective Removable Tapes can help improve work zone safety by marking temporary work zone lanes with removable, highly reflective, all-weather pavement markings. 3M™ Stamark™ Removable Black Line Mask covers and protects existing roadway markings when lanes and edge lines change.

Removable work zone markings for safety & guidance

3M™ Stamark™ Wet Reflective Removable Tape Series 710

According to the Federal Highway Administration, 24 percent of vehicle crashes in the U.S. are weather-related,¹ and 75 percent of these occur on wet pavement. These tragic figures are further amplified in work zones, where confusion adds to the danger of slippery roads. Applying removable retroreflective pavement markings for traffic changeovers can be critical to helping drivers navigate work zones safely—especially during wet weather.

- **Exceptionally durable.** 3M™ Stamark™ Wet Reflective Removable Tape Series 710 features a raised pattern construction embedded with 3M's unique, microcrystalline ceramic beads to ensure long-lasting visibility.
- **Superior adhesion and conformability.** A tough, conformable base material provides excellent adhesion to a wide range of road surfaces.
- **Fast and easy to apply and remove.** Easy application and removability reduce the exposure of both workers and drivers to work zone hazards.
- **Eliminates grinding.** When work zone markings are no longer needed, Series 710 removes easily, helping to avoid road scars left by grinding off other, more permanent markings.
- Available in white (710) and yellow (711).

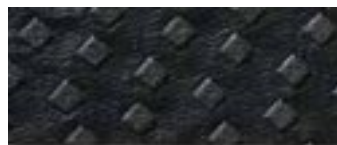
¹www.ops.fhwa.gov/weather



3M™ Stamark™ Removable Black Line Mask 715

This durable, matte black tape is applied over existing pavement markings, eliminating the need to grind, sandblast or waterblast existing markings for temporary lane shifts. Aggressive, pressure sensitive adhesive adheres well to the roadway, yet is easy to remove without the use of heat or solvents when the project is complete. 3M black line mask tape blends well with the existing pavement, minimizing confusion for motorists and helping traffic to flow naturally into the new traffic control configuration.

- Ideal for masking lane and edge lines, gore markings and crossovers
- Non-reflective, raised pattern virtually eliminates glare
- Available in a wide variety of widths to completely cover existing gore lines, skip lines and edge lines
- Effective day and night



To learn more about 3M™ Stamark™ Work Zone Tapes or 3M's full line of traffic safety products and services, visit 3M.com/roadwaysafety or contact your local 3M representative at 1-800-553-1380.



Traffic Safety and Security Division
3M Center, Bldg 0235-03-A-09
St. Paul, MN 55144-1000
USA
1-800-553-1380
www.3M.com/roadwaysafety

3M Canada Company
P.O. Box 5757
London, Ontario N6A 4T1
1-800-3MHELPS

3M México, S.A. de C.V.
Av. Santa Fe No. 55
Col. Santa Fe,
Del. Alvaro Obregón
México, D.F. 01210

3M and Stamark are trademarks of 3M.
Used under license in Canada.
Please recycle. Printed in U.S.A.
© 2013, 3M. All rights reserved.
75-0301-9803-2